

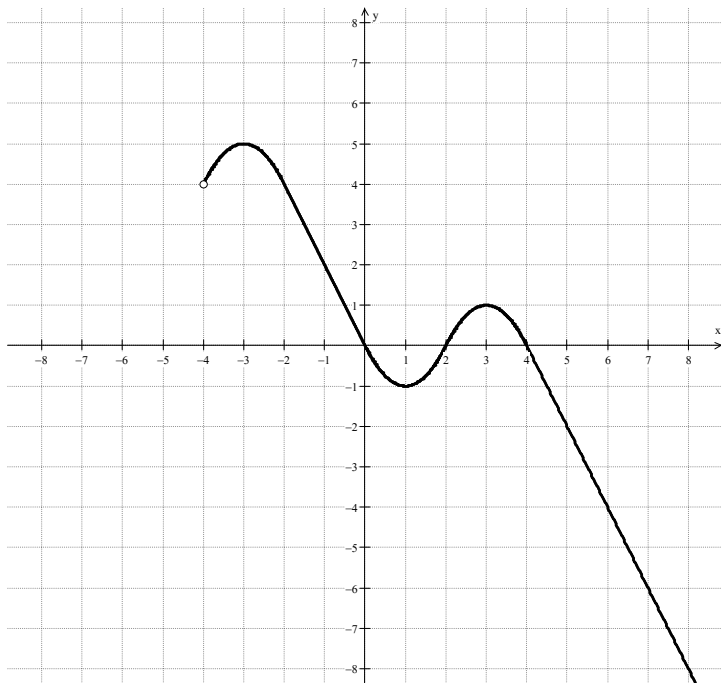
True or False: The image above represents the graph of a function. Why or Why not?

If the graph above was defined as $f(x)$ determine the domain/range and the following below:

$f(-3)$

$f(5)$

$\text{if } f(x) = 5 \text{ then } x = ?$



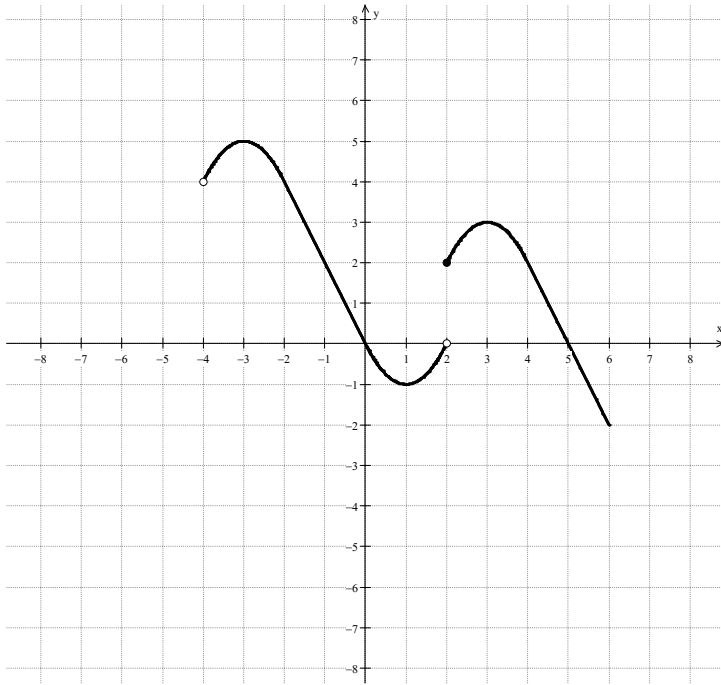
True or False: The image above represents the graph of a function. Why or Why not?

If the graph above was defined as $f(x)$ determine the domain/range and the following below:

$f(-1)$

$f(2)$

$\text{if } f(x) = 0 \text{ then } x = ?$



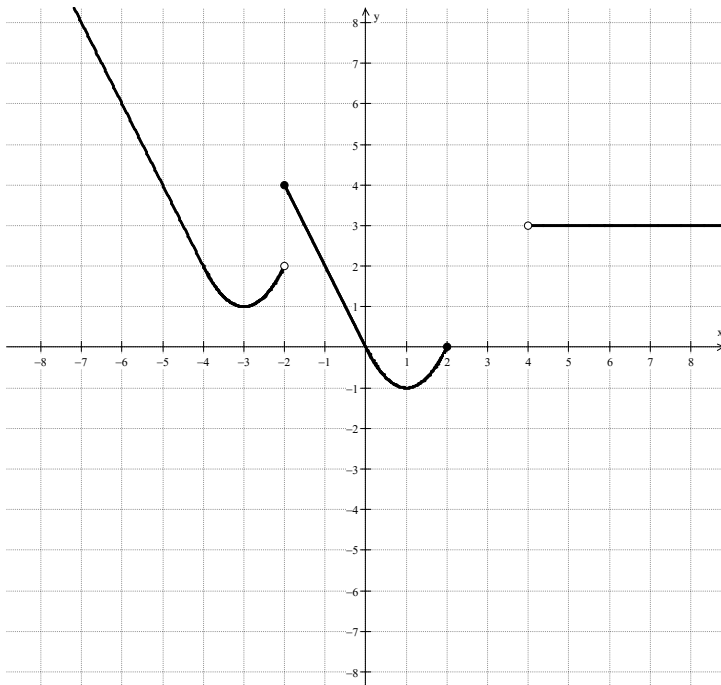
True or False: The image above represents the graph of a function. Why or Why not?

If the graph above was defined as $f(x)$ determine the domain/range and the following below:

$f(2)$

$f(5)$

if $f(x) = 2$ then $x = ?$



True or False: The image above represents the graph of a function. Why or Why not?

If the graph above was defined as $f(x)$ determine the domain/range and the following below:

$f(-6)$

$f(4)$

if $f(x) = -1$ then $x = ?$