



Mississippi College

Mississippi College Network (MCnet) 2007 - 2008

GENERAL NEW USER INFORMATION PACKET

Mississippi College strives to stay on top of the fast changing technological world. Currently, we have one T-3 fiber line in place for Internet access and a 100mb connection from the Law School (downtown Jackson) to the main campus. We are always looking at ways to continue improving our network.

MCNET SERVICES OFFERED TO STUDENTS

All students are given a Mississippi College network (MCnet) account that includes a network login, e-mail account and web space (web space must be requested by going to <http://www.mc.edu/mcnet/admin/>) at no extra charge. Students must be registered for the current term and have read and agreed to abide by the MCnet Acceptable Use Policy in order to receive a MCnet account. Student accounts will expire one year from the beginning of the last registered semester for students who have graduated or are no longer enrolled.

Visit <https://www.mc.edu/base/StudentRetrieve.php> to print out your Novell and GroupWise account information.

LABORATORIES

Currently, the following buildings contain computer labs:

General Purpose Computer Labs

- Mathematics, Chemistry & Computer Science (MCC) basement room 117
-1 general purpose lab
- Self Hall Basement – 3 labs used for general use and classes

Computer Labs used for classes only

- Jennings Hall 308 – English Writing Lab
- MCC 203, 204, 209 – 3 Math and Computer Science Labs
- Lowrey Hall 205 – Education Lab
- Jennings 103 Floor – Foreign Languages Lab
- Self Hall 303 – School of Business Lab
- Hederman 200 – Biology Lab
- Hederman 3rd Floor – Chemistry Lab

These PC labs contain current versions of various software packages including: Microsoft Office, Microsoft Works, Peachtree Accounting, SPSS, various Internet and programming tools and much more. If you have any questions concerning the computer labs located in MCC or Self Hall basement, contact Mr. Forster Sun at 601-925-3871. For all other labs, contact Mr. Gabe Bouck at 601-925-3939.

Macintosh Labs

- Self Hall 111 – class only
- LRC room AV3 – Music class only

NETWORK CONNECTIONS IN THE RESIDENCE HALLS

MCNet Wired Network Setup (New Men's and New Women's Dorms ONLY). All older dorms have wireless connections only.

1. Plug your computer into the network plug. There should be 2 for each room.
2. Turn your computer on.
3. Open Internet Explorer and follow all instructions given on the webpage that is displayed.

Instructions for wireless connection in the older dorms can be found at

<http://wireless.mc.edu>.

Dial-Up Access

Those people who are off campus can dial-in to MC from home. Instructions for setting up dial-up access can be found at <http://www.mc.edu/curstudents/apply.php>.

NETWORK CONNECTIONS IN THE CLASSROOMS

Most classrooms on campus are equipped with at least one network connection for instructional purposes. In the future wireless network access will be available in the classrooms.

NETWORK SUPPORT

At this time we do not offer full-time network/computer support to students (i.e. help with personal computers); however, we do offer limited support for network connection problems and other general network problems. Network Support is available Monday – Friday from 8:00 a.m. to 4:30 p.m. by calling 925-3939 or emailing support@mc.edu.

COMPUTER CLASSES

Students are offered an Intro to Computer Science (CSC114) course. This course offers basic computer/software knowledge, including Microsoft Windows, word processing software, the Internet and much more.

PERSONAL E-MAIL ADDRESS

Your personal email address will be joeuser@mc.edu (where joeuser is the login assigned to you). There are several ways you can access your MC email.

- **GroupWise WebAccess** - <https://webaccess.mc.edu/servlet/webacc>
- **POP Mail Client** (Netscape Messenger/Outlook Express)
POP server: gwpop.mc.edu
SMTP server: gwsmtpp.mc.edu
- **IMAP Mail Client** (Netscape Messenger/Outlook Express)
IMAP server: gwimap.mc.edu
- **GroupWise Client**

The GroupWise Client is available for download. However, it is approximately 80MB, so don't try it unless you are using a network connection or have a DSL/Cable connection.

MCnet does not support any email client other than Groupwise. The information listed above is the only help that will be given for other email clients.

Remember: Do NOT tell anyone your password or let anyone use your account!!
If at anytime you lose or forget your password you must come by or call Computer Services (basement of B.C. Rogers Student Center) to have your password reset.

Email Filtering

Mississippi College uses Barracuda as our email filtering program. Each and every mc email account is filtered through Barracuda. When emails are filtered as spam or as suspected spam, an email is sent to each user with the filtered emails listed. This email comes with the subject Spam Quarantine Summary. You then have the option to delete the spam or deliver any particular email that might have been caught by the filter but is not spam. Once you click **Deliver** to release the email from the Spam Quarantine Summary, a webpage will open allowing you to manage specific emails that have been caught by the filter. The delivered email will show up in the users Inbox momentarily. You can choose to delete each spam email individually or select all emails by putting a check in the top box that is next to the Time Received heading. Then select Classify as Spam or Classify as Not Spam.

If you choose to look at your filtered emails through the webpage, goto

<http://antispam.mc.edu>. You will have to enter your username and your Novell password to login from the website.

MCnet Wireless Network Setup

SETUP Windows XP SP1

1. Go to [START]-[SETTINGS]-[NETWORK CONNECTIONS]
2. Double click the wireless network icon
3. Highlight "MC.EDU" and choose [CONNECT]
4. Open Internet Explorer or your favorite web browser and you will be taken to the MCNet registration website. Follow all instructions.

SETUP Windows XP SP2

1. Go to [START]-[SETTINGS]-[NETWORK CONNECTIONS]
2. Double click the wireless network icon
3. Highlight "MC.EDU" in the list of Available Networks.
4. Click [CONNECT]
5. If you get an error message stating that MC.EDU is unsecure, please click [CONNECT ANYWAY]
6. Open Internet Explorer or your favorite web browser and you will be taken to the MCNet registration website. Follow all instructions.

Instructions for Macintosh:

SETUP Mac OS X

1. Go to the Applications folder in the Finder. Open the Internet Connect application.
2. Choose "mc.edu" from the Network pop-up menu. If "mc.edu" is not in the list, choose Other and enter "mc.edu."
3. Click CONNECT.
4. Open Internet Explorer or any web browser and you will be taken to the MCNet registration website. Follow all instructions given on the website.

OR

1. Click on the Airport menu in the menu bar.
2. Choose "mc.edu" from the Airport menu. If "mc.edu" is not in the list, choose Other and enter "mc.edu."
3. Open Internet Explorer or any web browser and you will be taken to the MCNet registration website. Follow all instructions given on the website.

Use of the Mississippi College (MCnet) Wireless Network is for MC faculty, staff, and current students only. Unauthorized access is strictly prohibited. For problems or additional information regarding the MCnet Wireless Network, please contact [MCnet Support](#).

FILTERED INTERNET ACCESS

Mississippi College's internet access is filtered for pornographic and other objectionable content. A tracking log is kept of all websites visited (or if blocked, attempted to visit) by faculty, staff and students.

A firewall controlling access to MCnet has also been implemented. The incoming firewall policy is set to "deny all" with selected ports being opened up for access to legitimate applications. Should you suspect a problem with internet traffic being blocked to a server on campus, please contact MCnet Support at (x3939 or support@mc.edu).

Explanation of Acceptable Use Policy

Please read the Acceptable Use Policy located near the end of this document. It clearly states how your dorm computers and any MC provided computers can be used. In summary, you may not use your computer for any monetary gain while it is attached to MCNet. If students run a business of any kind that uses the network/internet resources of MCNet, we are in violation of some of our legal agreements as a non-profit organization. Use of MCNet is strictly reserved for academic use only. File sharing utilities and peer to peer networking utilities on MCNet is not allowed (ex. Kazaa, gnutella, directconnect, bearshare, limewire, etc). Non-academic use such as gaming and miscellaneous web browsing does not take precedence on the network and as such is not supported by MCNet or Academic Computing.

"Resources should be used only in the manner intended. Mississippi College supported computing includes research, instructional and administrative activities, and may not be used for commercial purposes, or monetary gain."

Computer Services and Academic Computing do not service or provide ANY technical support for student-owned computers. This includes software problems with the Operating System or software that is installed or any peripherals such as printers, cameras, scanners, etc. Once a student's computer has successfully been connected to MCNet, it is the student's responsibility to keep it in that state (see Student Expectations). If a student brings in a computer with a suspected network connectivity related problem, they must stay in Computer Services with their computer. Computers can not be dropped off and picked up at a later time. Computer Services is not responsible for hardware or software damaged when trying to help with network connectivity related problems. Computer Services supports the network and the necessary hardware and software to attach to the network. Academic Computing supports the computing laboratories and classroom instructional equipment.

Useful Links

Following are some links that students may find useful:

- Spybot Search and Destroy: <http://www.safer-networking.org/en/index.html>
- AdAware: <http://www.lavasoftusa.com/software/adaware/>
- Symantec: http://www.symantec.com/product/index_homecomp.html
- McAfee: <http://us.mcafee.com/?cid=10348>
- Microsoft WindowsUpdate: <http://windowsupdate.microsoft.com>
- MCNet Homepage: <http://www.mc.edu/curstudents/computerservices.html>
- MCNet Software Help Desk: <http://www.mc.edu/curstudents/helpdesk.php>
- MCNet Virus Information and Downloads:
<http://www.mc.edu/curstudents/virusinfo.php>
- Banner Web Online Registration: <http://www.mc.edu/banner/index.html>

Student Expectations

Students are expected to perform the following maintenance on their computers while they are attached to MCNet:

- Keep virus scan utilities up to date by downloading the necessary patches from Symantec or McAfee websites. By doing this, students will ensure that their virus free computer remains virus free.
- Download and install Windows Updates from <http://windowsupdates.microsoft.com>.

If a student computer has problems connecting to the network, an abundance of pop-ups or is just rather slow after connecting to MCNet, please do the following:

- Search for spyware and adware: <http://www.mc.edu/curstudents/helpdesk.php> (bottom of the page).
- Make sure all Windows Updates and virus scan updates have been downloaded and installed on the machine.
- As a general rule, we recommend that students do not click on everything they see on the internet. This could result in downloading viruses, worms, spyware and other software that is harmful to the student's machine as well as MCNet. Please be careful when downloading files. If a website states that you need to download some sort of software to make it work and you don't recognize the company, DO NOT download or install it!!

Disciplinary Action

Consequences of not abiding by the Acceptable Use Policy and the above rules will result in disciplinary action by Mississippi College as stated in the AUP and the Tomahawk. Please be aware that access to MCNet is a privilege, not a right and should be treated as such. Consistent misuse of MCNet will result in the loss of your account and, depending on the offence, legal action could be taken.

"Abuse of computing privileges will be subject to disciplinary action. Computing privileges may be lost and violators will be subject to the usual judicial procedures of the College. Mississippi College reserves the right to examine all computer files, and to revoke access to any user at any time, regardless of enrollment or employment status."

Acceptable Use Policy (AUP) for Computing and Information Systems

(<http://www.mc.edu/aup.php>)

Purpose and Origin of This Document

The computing resources of Mississippi College should be used in a manner which is consistent with the Mission Statement and the principles of the College. The term computer resources includes all Mississippi College owned computer hardware, software, and communications links used for data transmission. Access to these resources and licensed use extends to College personnel, students, and authorized individuals. Each user bears the responsibility of following the guidelines set forth in this document, which addresses what is and is not proper use of the College's computing resources. Since computing environments change rapidly, this document must be flexible. It does not cover every possible situation, and it is subject to change.

Authorized and Secure Access

Users may access only those resources for which they have been specifically authorized. Access privileges do not extend to family members. For example, no user should let any other person access their computer account.

Resources should be used only in the manner intended. Mississippi College supported computing includes research, instructional and administrative activities, and may not be used for commercial purposes, or monetary gain.

Users are responsible for the resources entrusted to them. They should make appropriate use of protection features (such as passwords) and take precautions against others obtaining access.

Ethical Issues

Electronic text is no different than the printed word, and copyright law is applicable in most situations. Violations of authorial integrity, including plagiarism, unauthorized access, and copyright violations may be grounds for disciplinary actions and/or legal prosecution by the copyright owner. Users should not search for, access, or copy directories, programs, files, or data not belonging to them, unless permission has been granted by the author/owner.

Malicious Conduct

Users should not encroach on others' use of shared resources. This includes such activities as monopolizing computer resources for game playing, message sending or mail, or other trivial applications. Users must not attempt to modify system facilities or purposefully degrade system performance, nor should they attempt to subvert the restrictions associated with their computer accounts.

Disciplinary Action

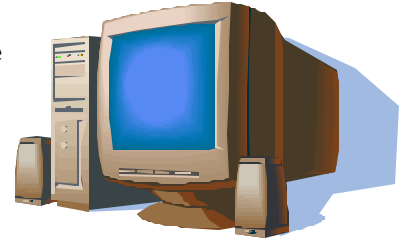
Abuse of computing privileges will be subject to disciplinary action. Computing privileges may be lost and violators will be subject to the usual judicial procedures of the College. Mississippi College reserves the right to examine all computer files, and to revoke access to any user at any time, regardless of enrollment or employment status.

Disclaimer

This policy does not preclude enforcement under the laws and regulations of the State of Mississippi and/or the United States of America. Internet access is also subject to the Acceptable Use Policies of those networks which a user may traverse, including but not limited to the SURAnet and NSFnet. Any questions concerning ethical or legal use of computing facilities should be directed to the Chair of the Information Systems Committee.

Recommended Computer Specifications for Students (2007-2008)

For all students who are interested in purchasing a **new PC**, we would suggest a laptop rather than a desktop. We have wireless internet access in all of the older dorms, Student Center, Student Lounge in Alumni Hall, Library, Cafeteria, Jazzman's and the Sky Ranch Grill for students to use. The new dorms have wired access to the campus network only.



The following specifications are minimum requirements for computers:

- Intel Pentium 4 2.5ghz processor or Intel's Centrino Technology.
- 512mb of ram or greater
- 40gb Hard Drive (or greater)
- Wired network card (for the new dorms) and an **802.11g** Wireless Network Card (for older dorms). These are typically built into laptops. A desktop typically will only have a wired network card built in.
- DVD/CD Writer combo drive (CD-RW combo drive is sufficient)
- Microsoft Office 2003 Professional (software used in classroom settings)
- Updated Norton or McAfee Virus Software (We can provide McAfee if you do not have an updated subscription of virus software. Students have to bring their computers to our office each year to get the software renewed.)
- USB personal printer is recommended

- **Students are responsible for their own computer repairs and maintenance**

Macintosh:

- Macintosh laptops from iBook/Powerbook G4s to the current MacBook/MacBook Pros will be totally sufficient

If you have already purchased a computer and you need a wireless network card for it, we recommend you purchase a Linksys Wireless Adapter. However, any brand of wireless adapter should work fine.

Please see www.efollett.com for academic discounts on software. If you have any questions, please direct them to MCNet Support at 601.925.3939 or email support@mc.edu.

Please note: MC does not sell nor require any type of computer packages for student use at this time nor does it endorse any particular computer vendor. However, Dell Computers offers a discount to faculty, staff and students. You must use the link on the MCnet home page (<http://www.mc.edu/mcnet>) in order to obtain this discount. Mississippi College is not responsible for the content, availability, operation, or performance of any other site to which the Mississippi College web site may be linked or from which this web site may be accessed.



**Mississippi
College**

MCnet Support

E-mail: support@mc.edu

Phone: 601-925-3939

© Copyright 1994 - 2004, Mississippi College. All rights reserved.
Mississippi College | 200 S. Capitol Street | Clinton, MS 39058 | (601)925-3000
www.mc.edu