

## **HISTORICAL HIGHLIGHTS OF MISSISSIPPI COLLEGE**

- ! Mississippi College, originally known as Hampstead Academy, received its first charter, signed by Governor David Holmes, on January 24, 1826. The name was changed to Mississippi Academy in 1827 at the request of the board of trustees.
- ! Three years later, on December 18, 1830, having become an institution of collegiate rank, the name was changed to Mississippi College. It was the third such institution in Mississippi, but as the other two institutions no longer exist, Mississippi College today has the distinction of being the oldest institution of higher learning in the state.
- ! Mississippi College, during its early years, was not church-related and was once offered to be ‘*the*’ State University. It has past affiliations with the community, the Methodists, the Presbyterians, back to the community and since 1850 it has been operated by the Mississippi Baptist Convention through an elected Board of Trustees.
- ! A private institution, the College in its early years was coeducational and in 1831, Mississippi College became the first such college in the U.S. to grant a degree to a woman.
- ! In 1850 the Female department was discontinued; and in 1853 a Central Female Institute, later renamed Hillman College, was established in Clinton. In 1942 Mississippi College purchased and absorbed Hillman College, and the institution was again coeducational.
- ! The Civil War caused Mississippi College to suffer: its endowment was destroyed, its student body disbanded, and its buildings deteriorated. Under the leadership of Dr. Warren S. Webb (1873-1891) the college stabilized.
- ! Under the administration of Dr. W. T. Lowrey (1898-1911), the endowment fund was renewed and the plant was greatly improved.
- ! The administration of Dr. J. W. Provine (1911-1932) was a fruitful period, seeing the completion of Provine Science Building (largely constructed in Dr. Lowrey’s administration), and the construction of Lowrey Hall, Alumni Hall, Farr-Hall Hospital, Jennings Hall, Ratliff Hall and Chrestman Hall. The endowment was increased to more than \$500,000 and in 1922 the College was initially accredited by the Southern Association of Colleges and Schools (SACS). The enrollment reached 400.
- ! During the twenty-five year administration of Dr. D. M. Nelson (1932-1957), the college successfully withstood the depression and emerged stronger. During World War II, women were once again admitted and the enrollment increased rapidly. The physical plant was expanded and Nelson Hall Administration Building, Hederman-Gunter Residence Hall and Mary Nelson Residence Hall were erected; Lowrey Hall and Ratliff Residence Hall were enlarged and improved.
- ! The College continued to grow under the administration of Dr. R. A. McLemore (1957-1968). Enrollment increased and the following buildings were constructed: Leland Speed Library, Aven Fine Arts Building (both of which were begun before Dr. Nelson retired), B. C. Rogers Student Center, Hederman Science Building, Latimer-Webb Residence Hall, Whittington Resident Hall, Self Hall and Hendrick House (President’s home). The old cafeteria was converted into a women’s gym; the Old Chapel (now Provine) was restored; Ratliff and Chrestman residence halls were renovated.

- ! Dr. Lewis Nobles' administration (1968-1993) saw continued growth in the areas of enrollment and quantity and qualifications of faculty. An addition to the library was made and the electronic media center emerged. Other construction included: Cockcroft Hall for the School of Nursing and Department of Home Economics, A. E. Wood Coliseum, and the James Moody Adams Field House. The Law School building in downtown Jackson was remodeled and was occupied by the School of Law in 1981. The Latimer House, a Victorian home, was dedicated in 1991.
  - ! With the resignation of Dr. Nobles on August 3, 1993, Dr. Rory Lee, Vice President for Institutional Advancement was named Acting President.
  - ! Dr. Howell Todd began his administration July 1994, and began physical improvement to maintain and replicate the architectural character of the campus. Renovations and remodeling have transformed Nelson Hall, Alumni Hall, Jennings Hall and Jennings Annex, Self Hall, Farr Hall, and Latimer-Webb Residence Hall. Remodeling was completed on B. C. Rogers Student Center, Hederman Science Building, Mary Nelson Residence Hall, and Hederman-Gunter Residence Hall. New construction included: The New Men's Residence Hall, The New Women's Residence Hall and the MC connector building between Self Hall and Hederman Science Building. The grounds have also undergone a make-over including The Piazza between Jennings and Alumni. New parking lots have emerged and plans are underway for the ground floor of a parking garage.
- A 106,000 square foot Heathplex now stands in place of the old tennis courts; new tennis courts, baseball field and practice fields have been built. A campus-wide computer network has been installed to offer access to the Internet and act as a communication link for all administration, faculty, staff and students.
- ! Every ten years since 1922, Mississippi College undergoes a self-study that culminates in a reaffirmation visit from a group of peers representing the Commission on Colleges of the Southern Association of Colleges and Schools (SACS). In 2002, Mississippi College was reaffirmed by SACS.
  - ! On July 1, 2001, Dr. Lloyd E. Roberts, Vice President for Business Affairs and Professor in the School of Business, also became Interim President of the College during the search for a replacement for retiring President Howell W. Todd.
  - ! Dr. Lee G. Royce began his administration in July 2002. During Dr. Royce's presidency, Lowrey Hall, Ratliff Hall and Aven Auditorium have been renovated, Hederman and Gunter Halls have been refurbished, a new football field, soccer field, track and new practice fields have been built, stands have been added at the Tennis Complex, a new campus entrance sign was constructed, new covered batting cages have been built at the baseball field, and a Gore sculpture has been added to the campus. Also, a new Art Gallery has been constructed and 3<sup>rd</sup> floor, Alumni Hall, has been renovated as Alumni Conference Center. The Accelerated Degree Program has been established, as well as new sites in Madison and Rankin counties which are bringing increased enrollment. Other significant accomplishments include creation of the Mississippi College Foundation Board, increased fund raising efforts which include an increase in alumni giving, beautification of the campus, increase in enrollment from 3300 to 4200, and endowment growth from \$32,000,000 to \$48,000,000. Mississippi College's vision to be a university recognized for academic excellence and commitment to the cause of Christ remains strong.

## **CURRENT ADMINISTRATION 2006-2007**

### **General Officers**

President	Dr. Lee G. Royce
Vice President for Academic Affairs	Dr. Ron Howard
Chief Financial Officer	Donna Lewis
Vice President for Student Affairs	Dr. Steve Stanford
Vice President for Advancement	Danny Rutland
Vice President for Christian Development	Dr. Eric Pratt
Vice President for Planning and Assessment	Dr. Debbie C. Norris
Vice President for Enrollment Services	Dr. Jim Turcotte

### **Academic Deans**

Interim Dean of the School of Christian Studies and the Arts	Dr. Wayne VanHorn
Interim Dean of the School of Humanities and Social Sciences	Dr. Gary Mayfield
Dean of the School of Science and Mathematics	Dr. Stan Baldwin
Dean of the School of Education	Dr. Don W. Locke
Dean of the School of Law	Dr. Jim Rosenblatt
Dean of the School of Nursing	Dr. Mary Jean Padgett
Dean of the Graduate School	Dr. Debbie C. Norris
Dean of the School of Business	Dr. Marcelo Eduardo

## Administrative Staff

Academic Computing Coordinator	Dr. Glenn Wiggins
Accelerated Degree Program Director	Barbara B. Garrison
Administration and Finance Director, Law	Emily Kennedy
Admissions Associate Director	John Kelly
Alumni Affairs Director	Ross Aven III
Assistant Dean of Admissions, Law	Patricia Evans
Athletics Director	Mike Jones
Baptist Student Union Director	Christy Carley
Bursar	Karen Key
Career Services Coordinator	Karen Lindsey-Lloyd
Community Service Center Director	Sharon Barnes
Computer Services Director	Barry Bounds
Continuing Education Director	Ken Gilliam
Controller	Cheryl Mobley
Counseling & Testing Center Director	Dr. Buddy Wagner
Development Director, Law	Thorne Butler
Enrollment Services Director	Chad Phillips
Financial Aid Interim Director	Karon McMillan
Institutional Research Coordinator	David de Medicis
Internal Auditor	Marilyn Allen, CPA
International Office Director	Jim Brackenridge
Learning Resources Center Director	Jimmie Hutto
Library Director, Law	Mary Miller, J.D.
Library Director, Speed Library	Kathleen Hutchison
Media Relations Director	Alice Smith
Personnel Director	Marilyn Sauls
Physical Plant Director	Glenn Worley
Placement Director, Law	Debbie Foley
Post Office Manager	Jean Hawkins
Public Safety Director	Jerald Sherman
Purchasing/Payables Director	Dana Elmore
Radio Operations Director	Traci Maughon
Registrar	Cathy Van Devender
Scheduling Coordinator	Sherry Bobo
Sports Information Director	Christopher Brooks
Student Activities Coordinator	Heidi Cheatham
Student Development Coordinator	Reba Jackson
Student Health Services Liaison	Dr. Mary Jean Padgett
Student Life Director	Rick Hartfield
Student Services Director, Law	John Brown
Telecommunications Director	Mac Culpepper

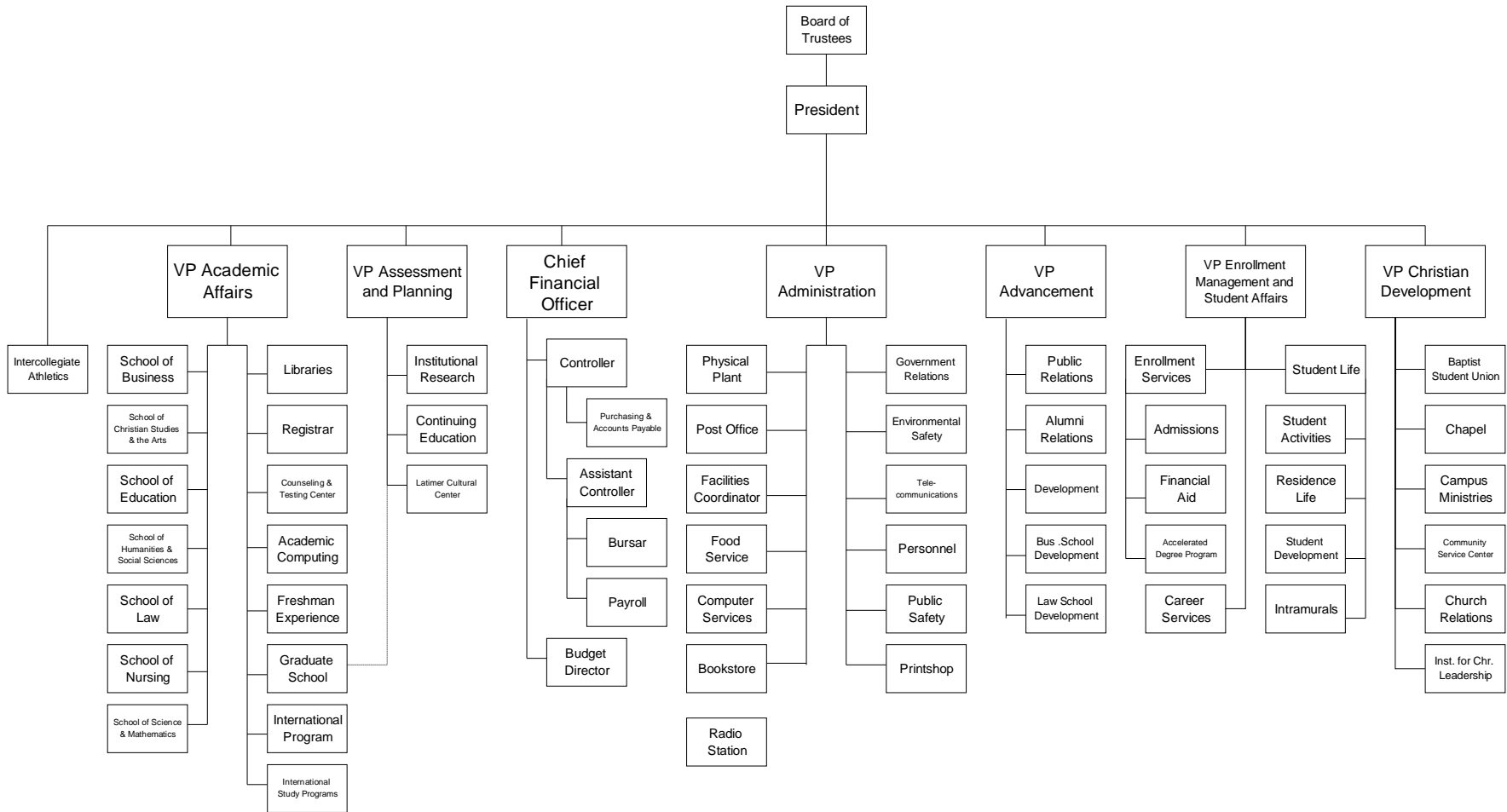
### Other Administrative Functions

Freshman Experience	Rebecca Steuck
Developmental Studies	Emily Fokeladah
Edward L. McMillan Program of International Study	Dr. Ron Howard
Latimer Cultural Center	Dr. Debbie C. Norris
Church Relations	Dr. Eric Pratt
Institute of Christian Leadership	Dr. Wayne VanHorn

### Peer Institutions

Institution	City, State	Website
Belmont University	Nashville, TN	<a href="http://www.belmont.edu">www.belmont.edu</a>
Campbell University	Buies Creek, NC	<a href="http://www.campbell.edu">www.campbell.edu</a>
Georgetown College	Georgetown, KY	<a href="http://www.georgetowncollege.edu">www.georgetowncollege.edu</a>
Hardin-Simmons University	Abilene, TX	<a href="http://www.hsutx.edu">www.hsutx.edu</a>
Houston Baptist University	Houston, TX	<a href="http://www.hbu.edu">www.hbu.edu</a>
Mercer University	Macon, GA	<a href="http://www.mercer.edu">www.mercer.edu</a>
Oklahoma Baptist University	Shawnee, OK	<a href="http://www.okbu.edu">www.okbu.edu</a>
Ouachita Baptist University	Arkadelphia, AR	<a href="http://www.obu.edu">www.obu.edu</a>
Samford University	Birmingham, AL	<a href="http://www.samford.edu">www.samford.edu</a>
Union University	Jackson, TN	<a href="http://www.uu.edu">www.uu.edu</a>

# Mississippi College Organizational Structure



Last Updated Tues. Aug. 8, 2006

**Mississippi College is accredited by, approved by, or holds membership in the following associations.**

Accrediting Agencies	Purpose
<b>Southern Association of Colleges and Schools (SACS)</b> 1866 Southern Lane Decatur Georgia 30000-4097 404 679-4501	Accredits the University to award baccalaureate, master's degrees, and first professional doctorates in law
<b>American Bar Association, Paralegal Program</b> ABA Standing Committee on Legal Assistants 750 N. Lake Shore Drive Chicago, IL 60611 312 988-5616	Accredits the baccalaureate and master's level programs in Paralegal Studies
<b>American Association of Colleges for Teacher Education</b> 1307 New York Avenue, Suite 300 Washington, DC 20005-4701 202 293-2450	Provides standards for Elementary Education
<b>American Chemical Society</b> 1155 16 Street NW Washington, DC 20036 202 872-4589	Certifies the baccalaureate level programs in Chemistry, Biochemistry and Chemical Physics
<b>Association of Baccalaureate Social Work Program Directors, Inc. (BPD)</b> P.O. Box 151463 Alexandria, VA 22315-9998 703 971-6715	Provides information to Social Work directors
<b>Council for Accreditation of Counseling and Related Education Programs (CACREP)</b> 5999 Stevenson Avenue Alexandria, VA 22304 703 823-9800	Accredits graduate Counseling programs
<b>Council on Social Work Education (CSWE)</b> Council on Social Work Education 1600 Duke Street, Suite 300 Alexandria, VA 22314-3421 703 683-8080	Accredits the baccalaureate level program in Social Work
<b>National Association of Schools of Music</b> 11250 Roger Bacon Drive, Suite 21 Reston, VA 22090 703 437-0700	Accredits all of the baccalaureate and master's level programs in Music
<b>Association of Collegiate Business Schools and Programs (ACBSP)</b> 7007 College Blvd, Suite 420 Overland Park, KS 66211 913 339-9356	Accredits all of the baccalaureate and master's level programs in Business
<b>National Council for Accreditation of Teacher Education (NCATE)</b> 2010 Massachusetts Avenue, NW Washington, DC 20036 202 466-7496	Accredits all of the baccalaureate and graduate programs in Teacher Education
<b>National League for Nursing Accrediting Commission (NLNAC)</b> 350 Hudson Street Washington, DC 20036 800 669-0656	Accredits the baccalaureate level program in Nursing (until December 2007)
<b>Commission on Collegiate Nursing Education</b> One Dupont Circle, NW, Suite 30 Washington, DC 20036-1120 202 887-6791	Accredits the baccalaureate level program in Nursing (no action until October 2007)
<b>Board of Trustees of State Institutions of Higher Learning</b> 3825 Ridgewood Road Jackson, MS 39211-6453 601 982-6690	Provides annual approval for the School of Nursing to operate within the state of Mississippi
<b>American Bar Association</b> 750 North Lake Shore Drive Chicago, IL 60611 312 988-5000	Accredits the School of Law
<b>Association of American Law Schools</b> 1201 Connecticut Ave., NW Washington, DC 20036-2605 202 296-8851	The School of Law is a member of the Association of American Law Schools

## CAMPUS SIZE AND LOCATION

Mississippi College is the largest private college in the state. Located in the community of Clinton in the center of the state, the College is only ten minutes away from Jackson, the state capital and largest metropolitan area in Mississippi.

The educational needs of a metropolitan area are changing, and Mississippi College responds to those needs by expanding its instructional programs. About 2,500 students are enrolled for undergraduate studies, and around 600-700 students are enrolled in the Graduate School which offers work leading to fifteen graduate degrees. In response to the need for legal education in the area of the state capital, Mississippi College also has a School of Law.

## OFFICE OF PUBLIC SAFETY

### SERVICES OFFERED

The role of the Office of Public Safety is to work towards ensuring the safety of all individuals while on campus and provide for the security of all properties of the college. In doing so, it is recognized that security at Mississippi College is everybody's business. Although no community can be totally risk-free in today's society, the office works toward securing partnerships with students, faculty, staff, administration and guests to create an atmosphere that is safe and conducive to learning. The office is also responsible for the control, regulation and flow of traffic on Mississippi College property. The Office of Public Safety is located on the First Floor of Alumni Hall and can be reached at 925-3204.

## CAMPUS CRIMES REPORTED TO SECURITY OR LOCAL POLICE

### MAIN CAMPUS (CLINTON)

Offense	2002	2003	2004	2005	2006
<b>Murder</b>	<b>0</b>	<b>0</b>	<b>0</b>	<b>0</b>	<b>0</b>
<b>Robbery</b>	<b>0</b>	<b>0</b>	<b>0</b>	<b>1</b>	<b>1</b>
<b>Sex Offense</b>	<b>0</b>	<b>0</b>	<b>0</b>	<b>0</b>	<b>0</b>
<b>Aggravated Assault</b>	<b>1</b>	<b>1</b>	<b>1</b>	<b>1</b>	<b>1</b>
<b>Burglary</b>	<b>12</b>	<b>11</b>	<b>24</b>	<b>10</b>	<b>14</b>
<b>Motor Vehicle Theft</b>	<b>0</b>	<b>2</b>	<b>3</b>	<b>3</b>	<b>0</b>



**LAW SCHOOL (JACKSON)**

<b>Offense</b>	<b>2002</b>	<b>2003</b>	<b>2004</b>	<b>2005</b>	<b>2006</b>
<b>Murder</b>	<b>0</b>	<b>0</b>	<b>0</b>	<b>0</b>	<b>0</b>
<b>Robbery</b>	<b>0</b>	<b>0</b>	<b>0</b>	<b>0</b>	<b>0</b>
<b>Sex Offense</b>	<b>0</b>	<b>0</b>	<b>0</b>	<b>0</b>	<b>0</b>
<b>Aggravated Assault</b>	<b>0</b>	<b>0</b>	<b>0</b>	<b>0</b>	<b>0</b>
<b>Burglary</b>	<b>0</b>	<b>0</b>	<b>0</b>	<b>0</b>	<b>0</b>
<b>Motor Vehicle Burglary</b>	<b>1</b>	<b>2</b>	<b>2</b>	<b>0</b>	<b>0</b>

**ARRESTS MADE FOR REPORTED CRIMES****MAIN CAMPUS (CLINTON)**

<b>Crime</b>	<b>2002</b>	<b>2003</b>	<b>2004</b>	<b>2005</b>	<b>2006</b>
<b>Liquor Law Violations</b>	<b>0</b>	<b>0</b>	<b>0</b>	<b>0</b>	<b>0</b>
<b>Drug Abuse Violations</b>	<b>1</b>	<b>0</b>	<b>0</b>	<b>0</b>	<b>0</b>
<b>Weapon Possession</b>	<b>0</b>	<b>1</b>	<b>0</b>	<b>0</b>	<b>0</b>

**LAW SCHOOL (JACKSON)**

<b>Crime</b>	<b>2002</b>	<b>2003</b>	<b>2004</b>	<b>2005</b>	<b>2006</b>
<b>Liquor Law Violations</b>	<b>0</b>	<b>0</b>	<b>0</b>	<b>0</b>	<b>0</b>
<b>Drug Abuse Violations</b>	<b>0</b>	<b>0</b>	<b>0</b>	<b>0</b>	<b>0</b>
<b>Weapon Possession</b>	<b>0</b>	<b>0</b>	<b>0</b>	<b>0</b>	<b>0</b>

## SELECTED KEY PERFORMANCE INDICATORS

No.	Key Indicators	2002-03	2003-04	2004-05	2005-06	2006-07
1	Board Students - % of capacity for the fall	95%	99%	88%	92%	95%
2	Board Students - % of capacity for the spring	86%	88%	80%	83%	87%
3	Applications - Freshmen	1,145	1,646	1,820	2,038	1,685
4	Applications - Graduate Programs	285	412	394	556	708
5	Applications - Law	756	909	1,136	1,261	1,122
6	Applications - Accelerated Program	0	197	232	279	233
7	Applications - Transfer	449	762	740	907	793
8	Average ACT scores - Freshmen	24.0	23.2	23.5	23.0	23.1
9	ACT Composite 25th and 75th Percentiles	21-27	20-26	20-27	20-26	20-26
10	ACT English 25th and 75th Percentiles	21-29	21-28	21-29	20-27	20-28
11	ACT Math 25th and 75th Percentiles	19-26	18-25	18-25	17-25	18-25
12	Retention Rate - Freshman to Sophomore	77%	82%	70%	73%	68%
13	Number of New Freshmen	412	431	389	395	487
14	Number of New Transfers	316	342	330	371	286
15	Number of New Law Students	154	165	183	202	196
16	ADP Headcount	N/A	90	220	304	371
17	Accelerated Degree Program-Retention	N/A	N/A	63%	61%	64%
18	Graduate Headcount	570	611	704	825	932
19	Minority Percentage	17%	20%	23%	28%	33%
20	Overall % Baptist	61%	54%	51%	49%	52%
21	Overall % Mississippi Baptist	52%	46%	45%	43%	46%
22	Additions to Endowment	\$ 382,135	\$ 2,997,723	\$ 2,145,641	\$ 951,616	\$ 950,452
23	# \$1,000+ donors	212	290	299	395	414
24	\$ value of deferred expectancies	\$24M	\$24M	\$22M	\$22M	\$22M
25	\$ additions to the capital fund	\$34,755,667	\$ 1,112,076	\$ 1,289,908	\$ 1,862,994	\$ 1,116,453
26	\$ undesignated for the Annual Fund	\$ 803,148	\$ 177,262	\$ 341,113	\$ 254,961	\$ 274,553
27	% of alumni giving	6.08%	7.68%	7.75%	6.86%	6.54%
28	Total Endowment (Market)	\$34.1M	\$38.4M	\$42.6M	\$48.3M	\$51.0M
29	Total institutional discount as a % of UG tuition	54%	50%	52%	50%	50%
30	Unrestricted Net Cash	(\$3,935,951)	(\$3,398,039)	(\$1,807,542)	(\$138,786)	\$1,076,877
31	Net Asset Value	\$94,123,645	\$100,541,595	\$102,908,094	\$114,658,533	\$118,385,864
	\$ value of grants received by schools (FY Total)	185,738	393,477	345,440	325,156	378,074
32	Arts & Sciences	46,182	293,821	168,575	209,500	273,418
33	Biology	0	0	0	0	0
34	Chemistry	46,182	133,821	0	127,500	273,418
35	Christian Studies	0	0	0	0	0
36	English	0	0	10,000	0	0
37	Foreign Languages	0	160,000	79,000	82,000	0
38	History & Political Science (Geography)	0	0	79,575	0	0
39	Mathematics & Computer Science	0	0	0	0	0
40	School of Business	0	0	40,000	40,000	40,000
41	School of Education	139,556	99,656	136,865	75,656	64,656
42						

**SELECTED KEY PERFORMANCE INDICATORS**

43	Law program credit hours	11,729	12,452	13,354	14,657	15,620
44	Education program credit hours--Grad & UG	14,964	17,350	17,835	18,332	20,038
45	Graduate credit hours	3,411	5,426	5,928	6,401	7,526
46	Undergraduate credit hours	11,553	11,924	11,907	11,931	12,512
47	Nursing program credit hours	2,898	3,162	3,795	3,966	4,133
48	Arts & Sciences program credit hrs--Grad & UG	44,345	48,105	47,360	48,127	49,026
49	Graduate credit hours	2,088	2,660	3,011	4,038	4,015
50	Undergraduate credit hours	42,257	45,445	44,349	44,089	45,011
51	Business program credit hours--Grad & UG	9,463	11,191	12,329	12,460	14,509
52	Graduate credit hours	1,719	1,767	1,749	1,563	1,882
53	Undergraduate credit hours	7,744	9,424	10,580	10,897	12,627
54	Interdisciplinary Studies credit hours	140	106	465	496	714
55	<b>TOTAL Credit Hours (1st Summer-Spring)</b>	<b>83,539</b>	<b>92,366</b>	<b>95,138</b>	<b>98,038</b>	<b>104,040</b>
56	Fall Term Enrollment <b>**IPEDS #s Oct 15</b>	3,227	3,406	3,588	3,905	4,038
57	% Faculty w/Terminal Degree	73%	72%	77%	75%	79%
58	Student/Faculty Ratio--Fall	14:1	15:1	15:1	15:1	15:1
59	% Enrolled - Freshmen <b>(ALL)</b>	13%	13%	11%	10%	12%
60	Five-year Graduation Rate	63%	61%	58%	60%	56%
61	Endowment/Student	\$ 10,567.09	\$ 11,274.22	\$ 11,872.91	\$ 12,368.76	\$ 12,630.01
62	Edu & Gen Expend/Credit Hrs	406	392	420	437	417
63	Instructional Expend/Credit Hrs	219	206	216	222	217
64	Inst & Academic Supp, % of E & G	28%	28%	29%	27%	26%
65	Library Expenditures, % of E & G	3%	3%	3%	4%	4%
66	Library Expenditures/Credit Hrs	13.4	13.7	14.1	15.7	16.4
67	Student Services, % of E & G	15%	16%	16%	16%	16%
68	Authorized Positions	435	442	423	435	434
69	Student/Authorized Position Ratio	7:1	8:1	8:1	9:1	10:1
70	Full-Time Faculty including Librarians	168	171	174	175	175
71	Adjuncts	88	104	121	148	176
72	Avg Faculty Salary (MAIN CAMPUS)	44,854	44,162	46,372	45,946	48,467
73	Faculty Fringe Benefits % (MAIN CAMPUS)		21%	20%	20%	19%
74	Avg Faculty Salary (LAW CAMPUS)	77,240	77,859	79,257	85,510	89,767
75	Faculty Fringe Benefits % (LAW CAMPUS)		18%	18%	18%	16%

Alumni Giving percentage calculated differently in years prior to FY2001

Not able to match counts with years prior to FY2003 for number of authorized positions--staff FTE.

The drop in dorm capacity from 2003-04 to 2004-05 was due to the renovation and reopening of Ratliff Hall.