



VISUALIZING CONCEPTS

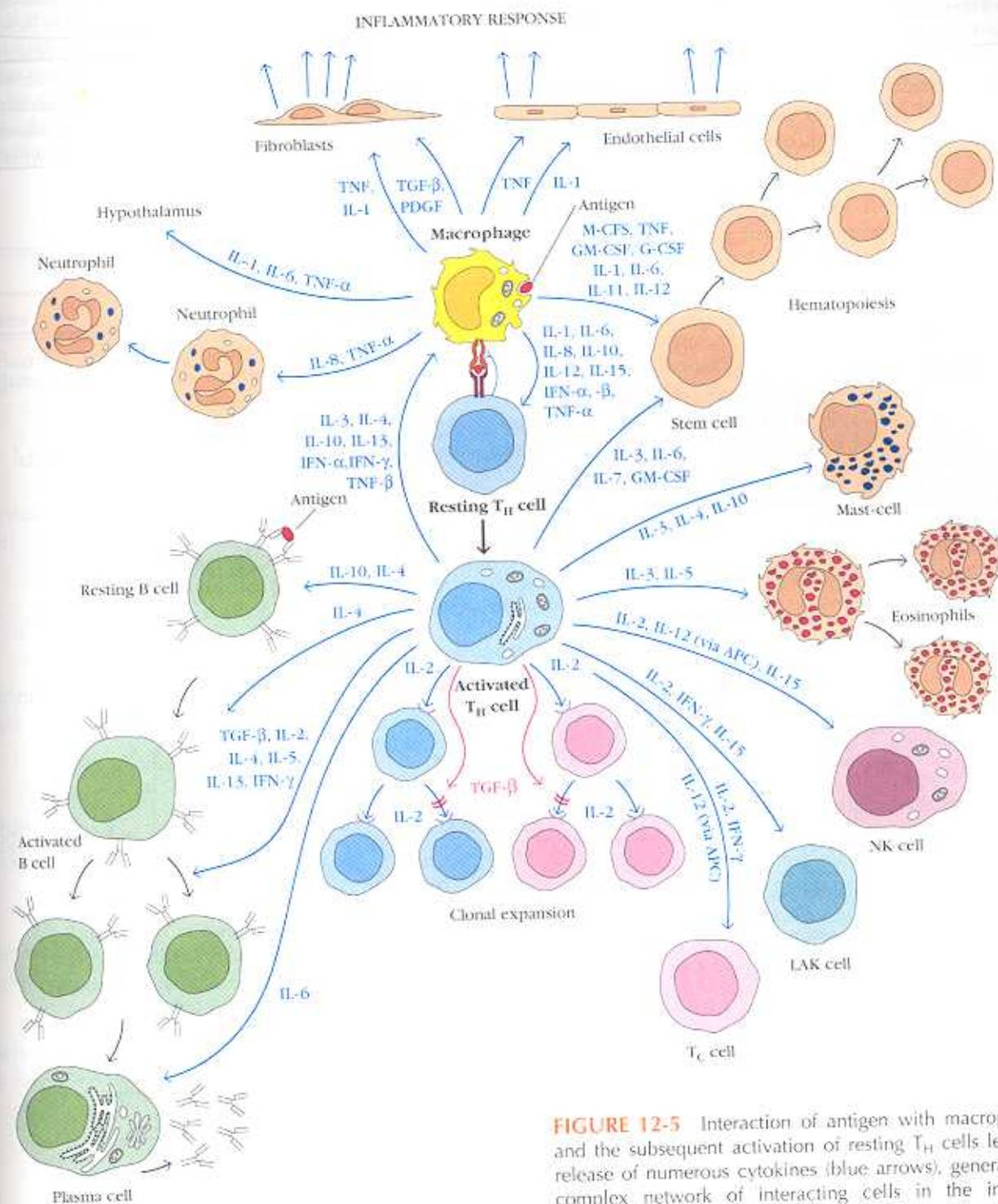


FIGURE 12-5 Interaction of antigen with macrophages and the subsequent activation of resting T_H cells leads to release of numerous cytokines (blue arrows), generating a complex network of interacting cells in the immune response: A small subset of T_H cells secretes $TGF-\beta$, a cytokine that can inhibit the proliferation of T cells (see red arrows).