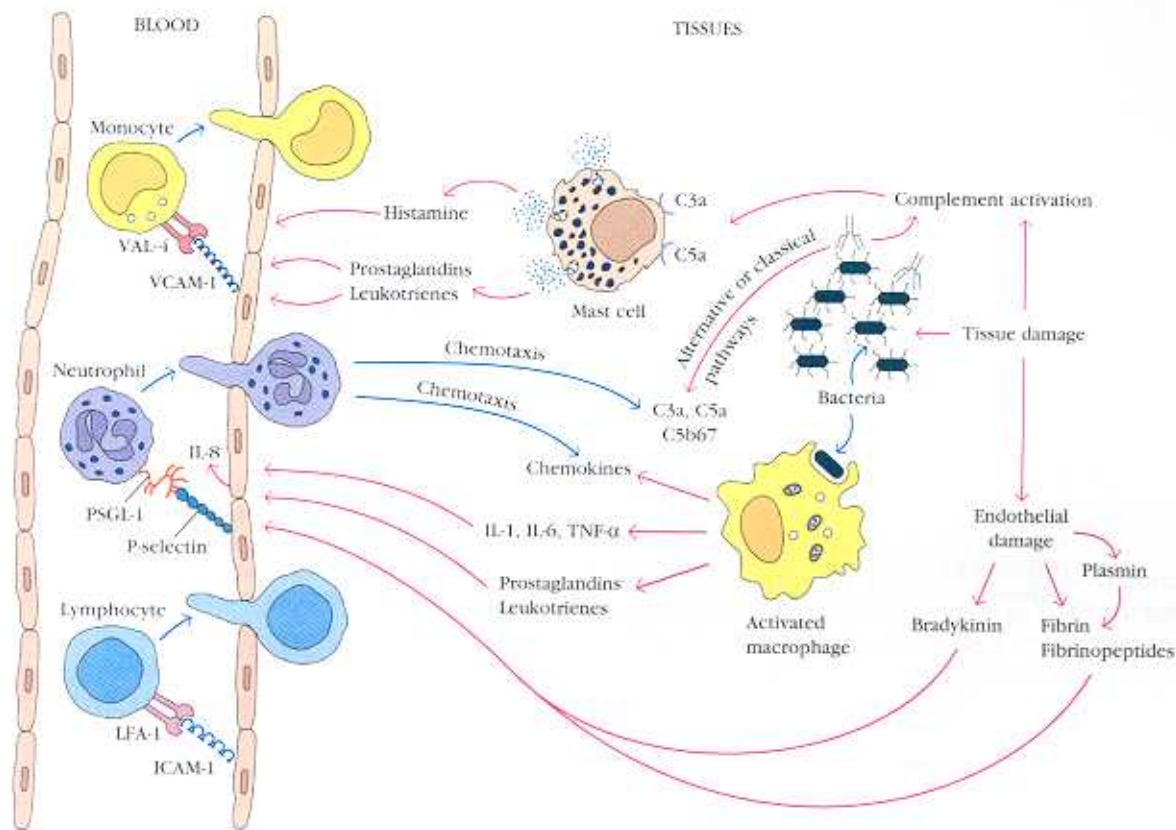




## VISUALIZING CONCEPTS



**FIGURE 15-12** Overview of the cells and mediators involved in a local acute inflammatory response. Tissue damage leads to the formation of complement products that act as opsonins, anaphylatoxins, and chemotactic agents. Bradykinin and fibrinopeptides induced by en-

dothelial damage mediate vascular changes. Neutrophils generally are the first leukocytes to migrate into the tissue, followed by monocytes and lymphocytes. Only some of the interactions involved in the extravasation of leukocytes are depicted.